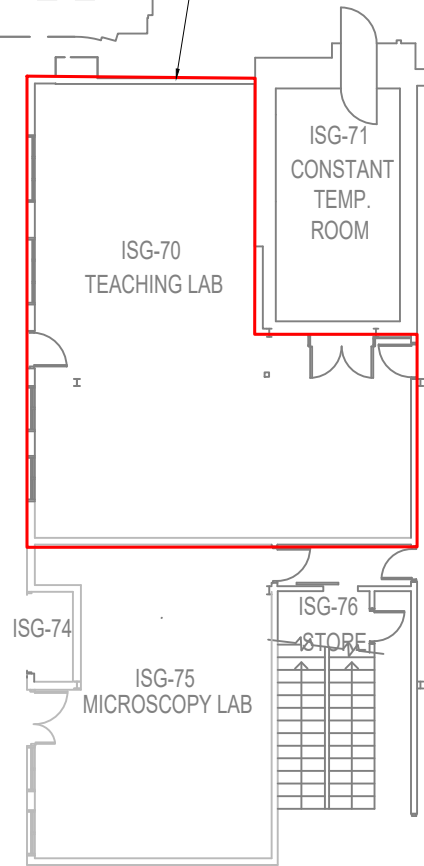
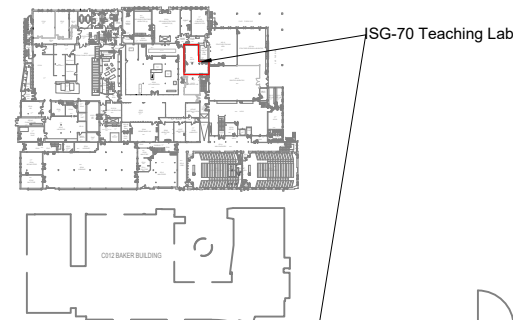


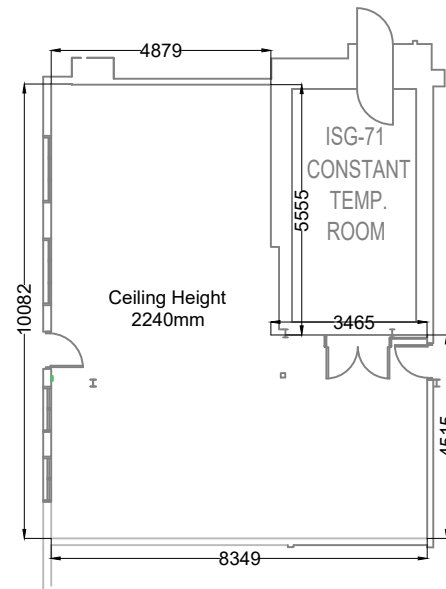
ISG-70 Teaching Lab Refurbishment - Ground Floor Inglis Building, Department of Engineering, Cambridge CB2 1PZ

Works Area

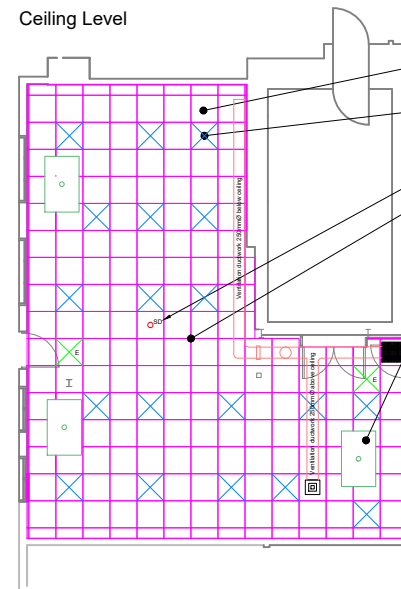
Inglis Building Ground Floor



General Arrangement

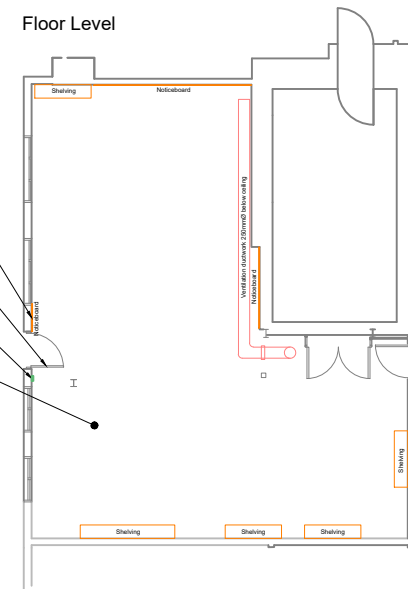


Schedule of Works - Strip-out Works

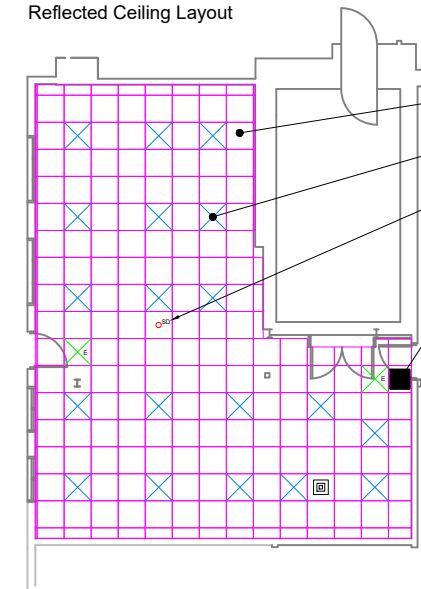


- B-1. Remove all ceiling tiles & dispose
- B-2. Isolate & remove recessed lighting. Store safely for re-instatement post ceiling installation
- B-3. Isolate & remove smoke detector head. Retain for re-instatement post ceiling installation
- B-4. Remove ceiling grid & dispose
- B-5. Drain IMI air conditioning units, isolate, remove units & dispose. Cap remaining pipework/ducts post removal
- B-6. Remove all wall fixtures & retain for future use
- B-7. Remove existing door, retain furniture for use on new doors, dispose of existing door
- B-8. Isolate & remove IMI air conditioning control unit & dispose.
- B-9. Remove all carpet tiles & dispose

Floor Level

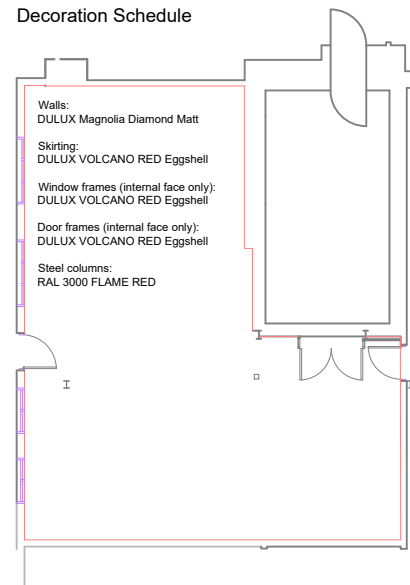


Schedule of Works - Refurbishment Works

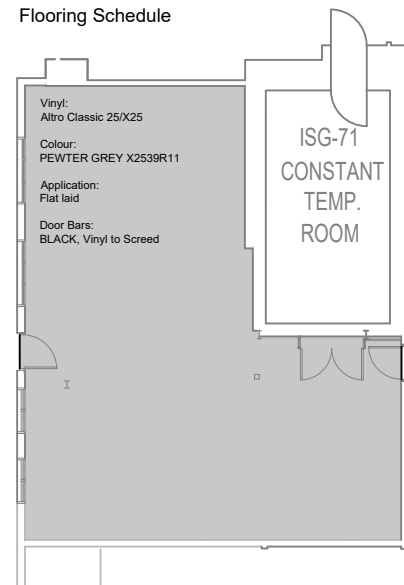


- C-1. Install T24 White Ceiling grid c/w 600 x 600mm White Ceiling tiles (Ceiling height 2240mm)
- C-2. Reinstall recessed lighting to ceiling grid, re-connect to electrical supply.
- C-3. Reinstall smoke detector head to ceiling grid. Test & commission
- C-4. Reinstall ceiling grilles to ceiling
- C-5. Prepare & decorate room as per 'Decoration Schedule'
- C-6. Prepare & flat lay vinyl flooring as per 'Flooring Schedule'
- C-7. Supply & install door as per 'Door Specification'
- C-8. Reinstall wall fixtures
- C-9. Clear & clean site

Decoration Schedule



Flooring Schedule



Door Specification Scale 1:25

